

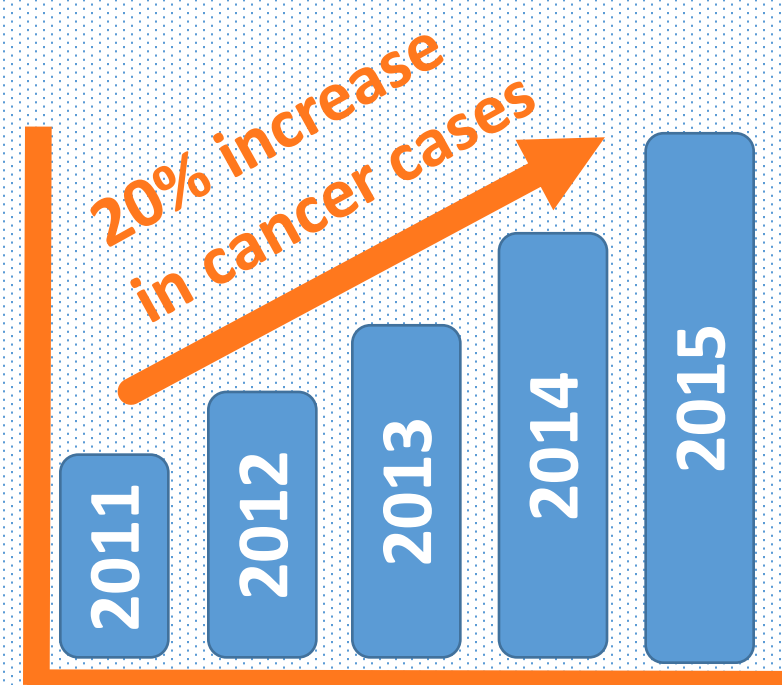
A Study of Family Caregivers' Needs, Burden of Care and Quality of Life over the Course of a Cancer Illness

by A/Prof Rathi Mahendran, NUS
Project funded by SCS Cancer Research Grant

Identified Areas in Current Landscape

Research Question & Methodology

Key Research Findings

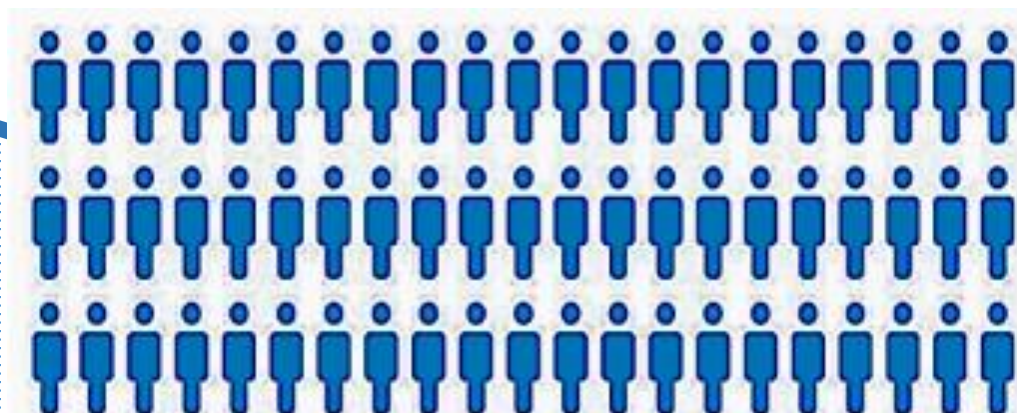


Cancer trends in Singapore



Limited attention to family caregivers who are the main care providers for cancer patients

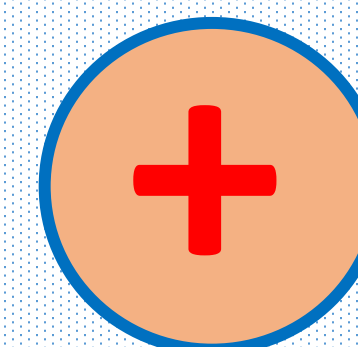
Q. What are the unmet needs and stress of adult cancer caregivers?



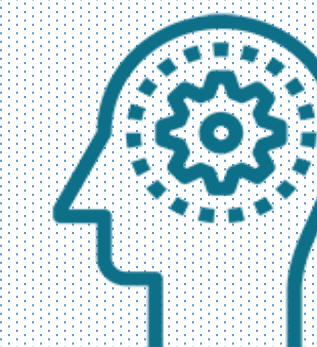
403 family caregivers to cancer patients participated in this study.

Project Awarding year: 2016
Project period: 1 Mar 2017-28 Feb 2018
Methodology: cross-sectional self-administered questionnaire

Unmet Needs and Stress identified



Medical



Psychosocial



Daily Activity



Financial

Medical unmet needs were highest among the four domains and this was consistent throughout the entire duration of treatment. Surprisingly financial unmet needs were low.

Future Programs to Support Family Caregivers



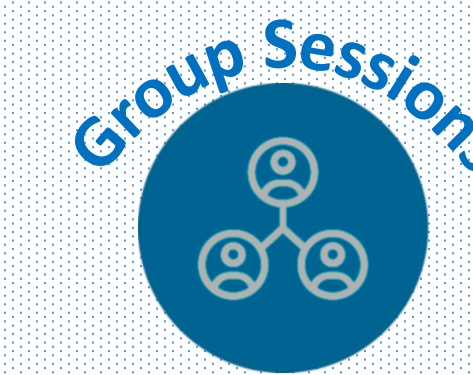
To address knowledge gaps



Symptom management & care



To de-stress



To build resilience and support

Support is to be focused on early treatment phase (initial 6 months) in a more targeted approach.